



# FAÇADE SYSTEMS

made from aluminium





COVER PHOTO  
Product: PREFA FX.12 roof and façade panel  
Colour: stone grey P.10  
Location: La Grave (France)  
Architect: Atelier 17 C – Architectes  
Installed by: Altibois

04	THE PREFA SUCCESS STORY   FD.TEC   P.10
----	---



06	RHOMBOID FAÇADE TILE 44 × 44
----	------------------------------



10	FAÇADE SHINGLE
----	----------------



14	FX.12 FAÇADE PANEL
----	--------------------



18	SIDING   SIDING.X
----	-------------------



26	PREFALZ
----	---------



30	ALUMINIUM COMPOSITE PANEL
----	---------------------------

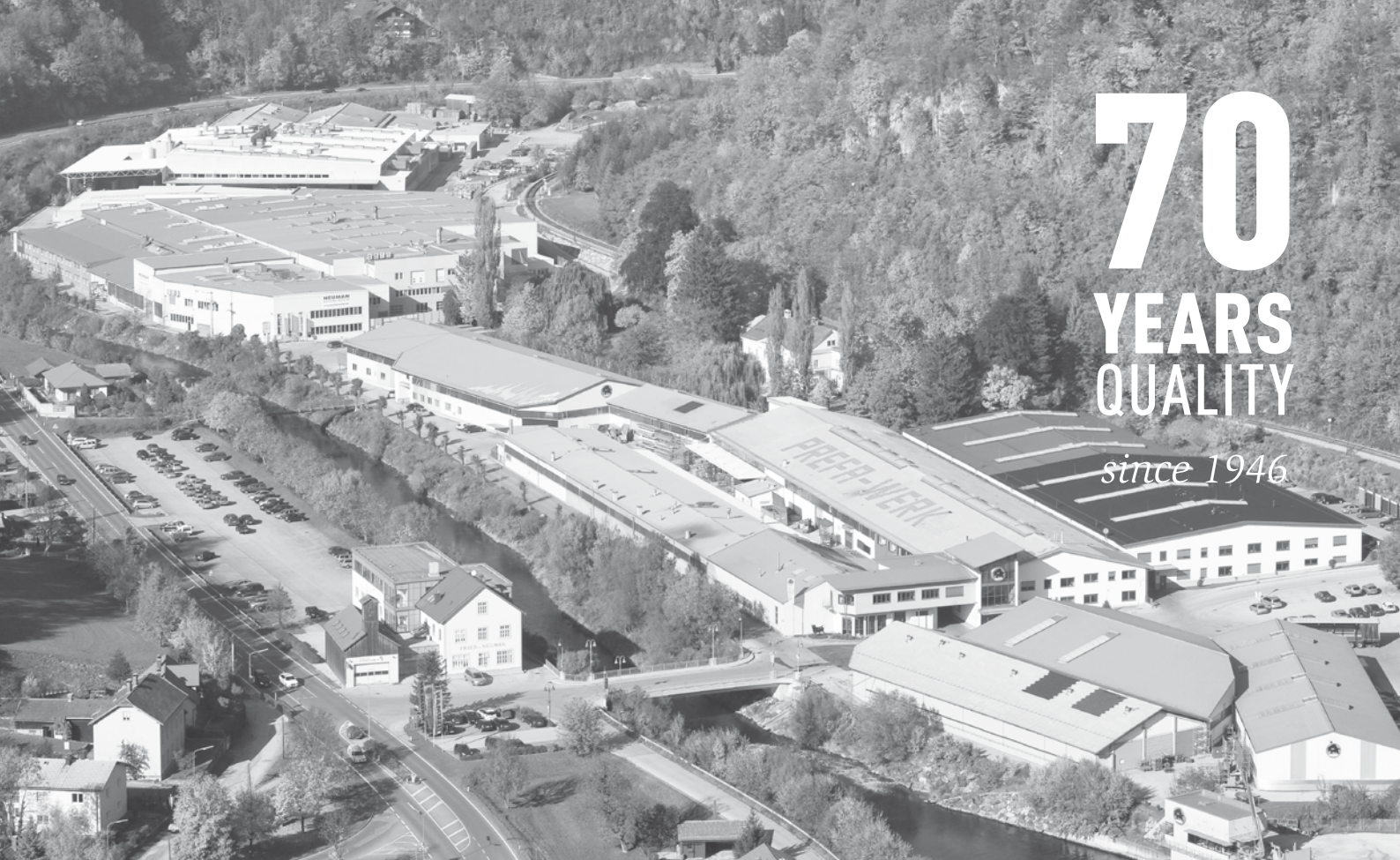


40	EXTRUDED PROFILES
----	-------------------



44	THE PREFA COLOUR RANGE
----	------------------------

46	THE PREFA PRODUCT OVERVIEW
----	----------------------------



**70**  
**YEARS**  
**QUALITY**  
*since 1946*



FD.TEC FREQUENCY  
DAMPER STRIPS

PREFA R.16 ROOF TILE



## FD.TEC TAKES THE MOMENTUM OUT OF SOUND

PREFA's unique FD.TEC frequency damper technology reduces unwanted frequency ranges to a minimum, and prevents certain sound emissions to a large extent. The purpose of the FD.TEC frequency damper strips attached to the back of all small format PREFA roof elements is to absorb frequencies that can be caused by rain and hail.

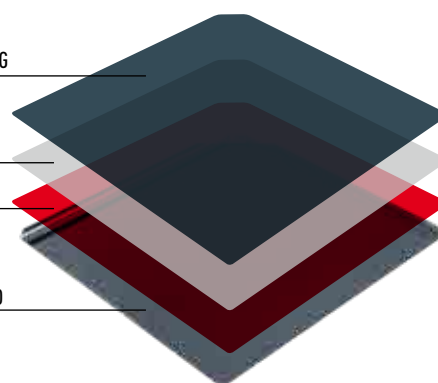


P.10 COIL COATING

PRIMER

PRE-TREATMENT

PREFA RHOMBOID  
ROOF TILE



## P.10 COLOUR-FAST SURFACE

With PREFA P.10, we have developed a surface that meets even the highest quality standards. The PREFA P.10 surface coating is the ideal complement for many PREFA products. The result is a material which withstands external influences and stresses and at the same time is incredibly light and stable, offering a wide range of planning and design possibilities.





# THE PREFA SUCCESS STORY

PREFA has been successfully developing, producing and marketing aluminium roof and façade systems in Europe for 70 years.

## 1946 DEVELOPMENT OF THE FIRST ALUMINIUM ROOF TILE

Gödl, the master metal worker and roofer from Salzburg, invents "PREFA", the aluminium roof tile

## 1955 START OF PRODUCTION IN MARKTL

The production of PREFA is taken over by the aluminium rolling plant, Fried. v. Neuman Zink- und Aluminiumwalzwerk

## 1978 DEVELOPMENT OF THE TWO-LAYER STOVE ENAMEL SURFACE

Market launch of the two-layer stove enamel finish and coated aluminium strips

## 1980 DEVELOPMENT OF THE SP80 SURFACE

PREFA introduces the pioneering SP80 coating system in anthracite, brown and dark green

## 1981 PREFA IS TAKEN OVER BY TUBEX

Fried. v. Neuman is taken over by the Tubex group under the management of Dr. Cornelius Grupp

## 1983 DEVELOPMENT OF SHINGLES AND SIDINGS

PREFA starts producing aluminium shingles and sidings

## 1998 WASUNGEN EXPANDS

6 years after the start of production, another factory is opened in Wasungen (Germany)

## 2001 "THE ROOF AS STRONG AS A BULL!"

From 2001, the PREFA brand is successfully characterised by its distinctive new logo and slogan

## 2004 EXPANSION OF EUROPEAN DISTRIBUTION

In 2004, PREFA sets up distribution companies in Italy, the Czech Republic, Hungary and Poland

## 2005 PREFA ACADEMY MARKTL

PREFA imparts a wealth of knowledge on products, technology, installation and much more at its training centre

## 2010 DEVELOPMENT OF THE P.10 SURFACE

The PREFA P.10 surface meets the highest architectural standards

## 2012 FX.12 ROOF AND FAÇADE PANEL

With its innovative FX.12 panel, PREFA offers the perfect combination of appearance and protection

## 2015 PREFA SQUARE DOWNPIPE

PREFA introduces a completely new architectural style for roof drainage

## 2016 R.16 ROOF TILE | RHOMBOID ROOF AND FAÇADE TILE 44 x 44

PREFA's innovative products combine all the aesthetics of larger formats with significantly optimised handling during installation.

Product: PREFA rhomboid roof and façade tile 44 × 44  
Colour: oxide red P.10 | light grey P.10  
Photo montage







# RHOMBOID FAÇADE TILE 44 × 44

When small formats  
unveil new dimensions ...



## Creating surprising effects

PREFA rhomboid façade tiles in the large 44 × 44 cm format add surprising touches to the tried and tested “scaly” appearance of buildings. The fascinating rhomboid shape creates a contemporarily-styled façade appearance which emphasizes the overall design and makes every building unique and full of character. The integrated fastening strips facilitate speedy and inexpensive installation of the façade elements.

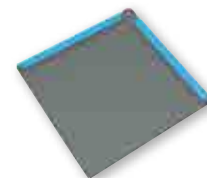






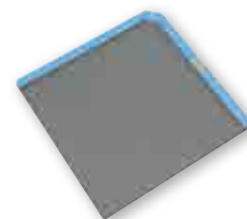
#### PREFA RHOMBOID FAÇADE TILE 20 × 20 — TECHNICAL DATA

Material	coil coated aluminium, 0.7 mm thick
Fastening	direct, using 1 PREFA ring nail per rhomboid façade tile 20 × 20 = 25 ring nails per m <sup>2</sup>
Installation	on fully boarded substrate (thickness in accordance with national guidelines or regulations, PREFA recommends 24mm plywood)
Size	200 × 200 mm (cover)
Weight	2.8 kg/m <sup>2</sup>



#### PREFA RHOMBOID FAÇADE TILE 29 × 29 — TECHNICAL DATA

Material	coil coated aluminium, 0.7 mm thick
Fastening	1 tile clip per rhomboid façade tile 29 × 29 = 12 clips per m <sup>2</sup>
Installation	on fully boarded substrate (thickness in accordance with national guidelines or regulations, PREFA recommends 24mm plywood)
Size	290 × 290 mm (cover)
Weight	2.6 kg/m <sup>2</sup>



#### PREFA RHOMBOID FAÇADE TILE 44 × 44 — TECHNICAL DATA

Material	coil coated Aluminium, thickness 0.7 mm
Fastening	direct, using 4 PREFA ring nails per rhomboid façade tile 44 × 44 = 20 ring nails per m <sup>2</sup>
Installation	on fully boarded substrate (thickness in accordance with national guidelines or regulations, PREFA recommends 24mm plywood)
Size	437 × 437 mm (cover)
Weight	2.6 kg/m <sup>2</sup>







# FAÇADE SHINGLE

When perfection meets elegance



Product: PREFA façade shingle  
Colour: anthracite P.10  
Location: Kaltern (Italy)  
Installed by: Demez Adam









Product: PREFA façade shingle  
 Colour: metallic silver  
 Location: Imst (Austria)  
 Architect: Tabernig  
 Installed by: Haid Nothdurfter



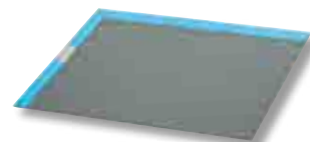


# Surprisingly diverse possibilities in proven aesthetics

Small-format façade shingles are considered to be the popular classics of façade design. Thanks to their flexibility, small, narrow spaces can be realised in the same way as larger façades — and always with top technical quality, of course. Owing to their concealed fasteners, the small-format façade shingles also create an attractive appearance that meets even the highest expectations.

## PREFA FAÇADE SHINGLE — TECHNICAL DATA

Material	coil coated aluminium, 0.7 mm thick
Fastening	1 PREFA patent clip per shingle = 10 clips per m <sup>2</sup>
Installation	on fully boarded substrate (thickness in accordance with national guidelines or regulations, PREFA recommends 24mm plywood)
Size	420 × 240 mm (cover)
Weight	2.5 kg/m <sup>2</sup>





Product: PREFA FX.12 roof and façade panel  
Colour: stone grey P.10  
Location: La Grave (France)  
Architect: Atelier 17 C – Architectes  
Installed by: Altibois







# FX.12 ROOF AND FAÇADE PANEL

The product turns  
architectural visions into reality



## FX.12: unique design, full of character

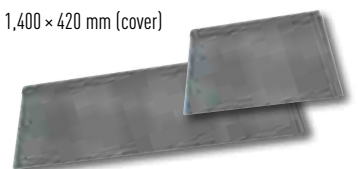
The FX.12 façade panel is an innovative and unique element which, with its crisscross indentations, enables particularly futuristic surface designs to be created. This individual appearance, which differs depending on how the light falls in, makes every building unique. The two different format sizes and the asymmetrical appearance further accentuate the individual character of each building.

Product: PREFA FX.12 roof and façade panel  
Colour: anthracite P.10  
Location: Lipnice nad Sázavou (the Czech Republic)  
Architect: František Čekal  
Installed by: Střechy G&D sdružení živnostníků



### PREFA FX.12 ROOF AND FAÇADE PANEL — TECHNICAL DATA

Material	coil coated aluminium, 0.7 mm thick
Fastening	direct, using 3 PREFA ring nails 28/25 (small panel) or 5 PREFA ring nails 28/25 (large panel)
Installation	on fully boarded substrate (thickness in accordance with national guidelines or regulations, PREFA recommends 24mm plywood)
Size	700 × 420 mm and 1,400 × 420 mm (cover)
Weight	2.4–2.5 kg/m <sup>2</sup>






Product: PREFA FX.12 façade panel  
Colour: light grey P.10  
Location: Berlin (Germany)  
Architect: Lusin Architektur  
Installed by: Marco Riemelt Dachdecker GmbH







Product: PREFA siding  
Colour: special colour  
Location: Asti (Italy)  
Architect: GAP Studio  
Installed by: Lattneria Mauro Galavotti



# SIDING | SIDING.X

Pure aesthetics  
across the full length and breadth





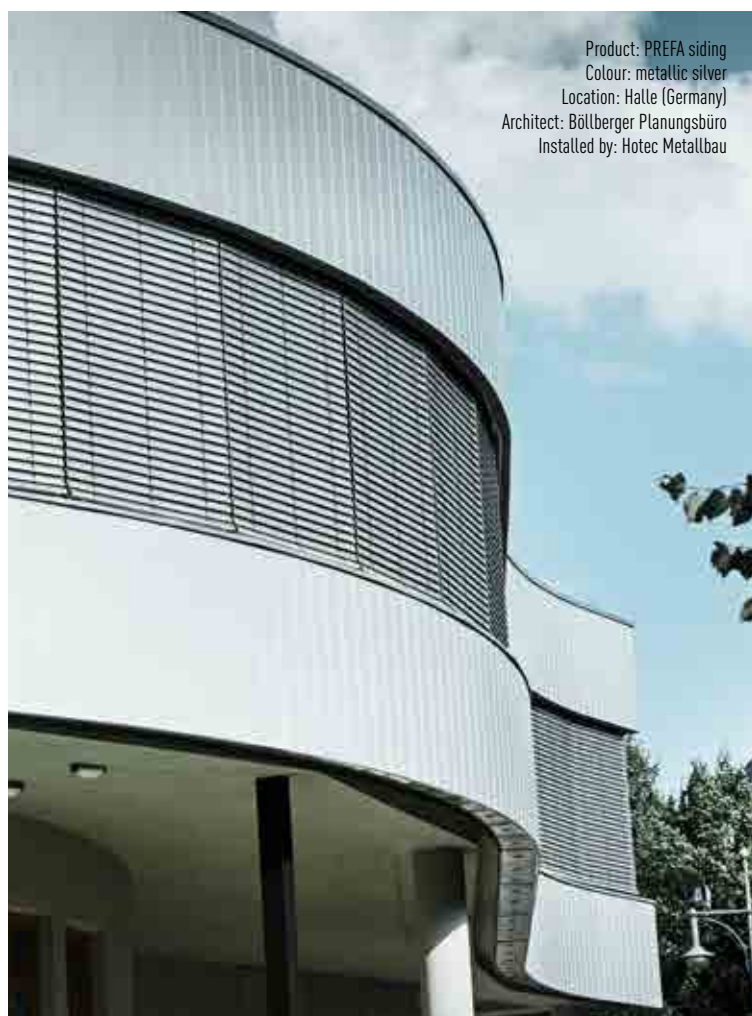


Product: PREFA siding | corrugated profile  
Colour: metallic silver | smoke silver  
Location: Hollabrunn (Austria)  
Architect: Maurer & Partner  
Installed by: Seyfried-Jecho



# Intelligent solutions that convince right across the board

The PREFA façade siding gives your building a distinctive look and distinguishes itself with its outstanding constructive and functional characteristics.



## PREFA SIDING — TECHNICAL DATA

<b>Material</b>	coil coated aluminium, thickness 0.7 - 1.2mm depending on dimension; smooth, stucco or lined surface with or without shadow gap option
<b>Standard formats</b>	138 × 0.7 mm, 200 × 1.0 mm, 300 × 1.2 mm, 400 × 1.2 mm
<b>Weight</b>	approx. 3.3 to 4.3 kg/m <sup>2</sup> , depending on the width
<b>Length</b>	500–2500 mm for all widths when using the PREFA joint, 500–6200 mm for all widths without using the PREFA joint
<b>Fixing</b>	screwed to aluminium or timber substructure



## PREFA SIDING.X — TECHNICAL DATA

<b>Material</b>	coil coated aluminium, thickness 1.0mm
<b>Standard formats</b>	200 × 1.0 mm   300 × 1.0 mm   400 × 1.0 mm
<b>Weight</b>	approx. 3.3 to 4.3 kg/m <sup>2</sup> , depending on the width
<b>Length</b>	500–2500 mm for all widths when using the PREFA joint, 500–6200 mm for all widths without using the PREFA joint
<b>Fixing</b>	PREFA screws to metal or timber substructure

Product: PREFA Siding.X  
Colour: black grey | bronze  
Location: Oberarth, Switzerland  
Architect: Anton Ulrich GmbH





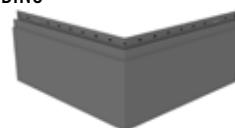
JOINT.138 | 200 | 300

1



CORNER SIDING

2



The “Joint.138|200|300|400” innovation is a special connection piece which ensures a consistent gap when installing sidings (with a 15 mm shadow gap). It can be installed independently of the substructure which ensures quick and flexible use. The new corner siding ensures a smooth transition at the corners and edges, giving the impression that the façade is made in one piece.

Another new element is the lined surface structure which gives the façade a distinctive, elegant appearance.

## Expressive and unique buildings, created from a wealth of diversity

Creative façade dreams can come true with PREFA sidings. The diverse design possibilities with variable visible widths (with and without shadow gaps), the smooth, stucco or lined surface finishes and the broad range of colours provide endless possibilities for

creating individual and long-lasting aluminium façade solutions. Whether for renovations or new builds, intelligent façade solutions are guaranteed with PREFA façade sidings.



# Building-related special solution

The Gallneukirchen deaconry in Upper Austria decided to build a new factory canteen in 2012. The challenge facing the architects was to use the special topographical conditions to their advantage to create a coherent and functional building with a contemporary

appearance. So the building was built over two sites on different levels. The building structure itself features a range of inter-dependent protective roofs. Individual parts of the building protrude outwards forming a projecting roof over the floor below.

Product: PREFA perforated | non-perforated sidings  
Colour: metallic silver  
Location: Gallneukirchen (Austria)  
Architect: Luger & Maul | Schröckenfuchs  
Installed by: Märzinger metal workers and roofers

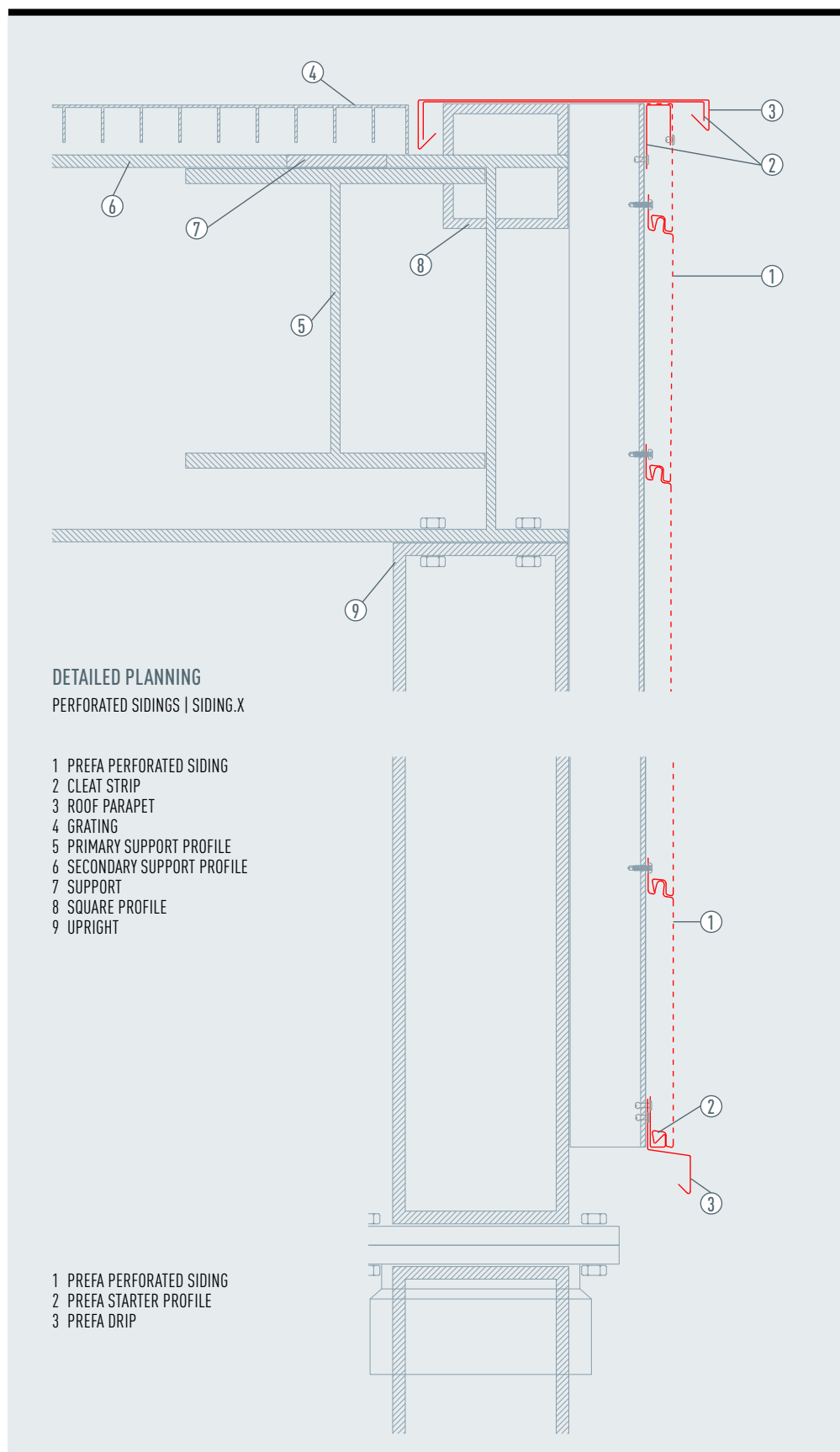




The building's supporting structure is made of reinforced concrete. A pre-fabricated support/beam/slab system meant that installation was quick and flexibility high. On the upper floors, the outer shell is made of PREFA sidings and in the yard area, of exposed concrete pre-cast elements in different thicknesses depending on the insulation requirements of the functions accommodated behind them. The outer material is layered slightly differently on each floor.

The basement is equipped with smooth, exposed concrete surfaces which give it a strong and sturdy base-like character. The kitchen level gives the impression of being a stronger horizontal, yet softer, structure through the arrangement of horizontal PREFA sidings in a standard metallic silver colour (similar to RAL 9006).

As the technical level was intended to give the same impression as the kitchen level, it was overlaid with perforated (Rv 5/8 = offset round perforations) PREFA sidings in the same shade. This screen, which surrounds the entire floor, also acts as a visual protection for the capacitors. The gleaming top floor has the lightest and most rugged appearance. Due to the particular location of the building, the flat roof level was also treated as a "fifth façade" and was also covered with perforated metal grating.





# PREFALZ AND FALZONAL

Everything you can imagine is feasible!



Product: Falzonal  
Colour: maya gold  
Location: Olching (Germany)  
Architect: Reinhard Maier-Trommeter  
Installed by: Prens roofers and metalworkers





Product: Prefalz  
Colour: patina grey  
Location: Vilvoorde (Belgium)  
Architect: Eva de Wachter  
Installed by: A&S Dakwerken







#### PREFALZ — TECHNICAL DATA

<b>Material</b>	coil coated aluminium, 0.7 mm thick
<b>Dimensions</b>	0.7 × 500 mm (flashing strips: 0.7 × 650 mm; 0.7 × 1,000 mm)
<b>Weight</b>	approx. 1.89 kg/m <sup>2</sup> (actual consumption with 500 mm strip: approx. 2.3 kg/m <sup>2</sup> )
<b>Installation</b>	on fully boarded substrate (thickness in accordance with national guidelines or regulations, PREFA recommends 24mm plywood)
<b>Fastening</b>	PREFA fixed and sliding clips, spacing in accordance with static requirements



Product: Prefalz  
 Colour: plain aluminium  
 Location: Krems (Austria)  
 Architect: Mang  
 Installed by: Hintenberger Dächer- und Holzbau GmbH

## Complex challenge — simple solution!

Prefalz comes in an impressive variety of colours and shapes. The reason for this is simple: as it is made of aluminium, Prefalz is more pliable than most comparable folding materials and therefore easy to shape. This results in countless individual design possibilities that would barely be conceivable with any other material. The material's flexibility does not affect its paint quality which means that the façade lasts a lifetime.

Product: PREFA aluminium composite panel  
Colour: pure white  
Location: Bad Tatzmannsdorf (Austria)  
Architect: DI Gerald Prenner  
Installed by: Grassel GmbH







# COMPOSITE PANEL

Aesthetics take shape.  
Any shape.



Product: PREFA aluminium composite panel  
Colour: smoke silver, metallic silver, light grey  
Location: Monthey (Switzerland)  
Architect: Losinger Marazzi SA  
Installed by: Rocpan SA







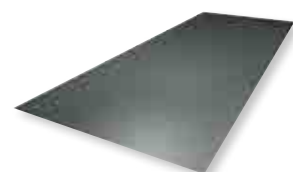
Product: PREFA aluminium composite panel  
 Colour: special colour  
 Location: Innsbruck (Austria)  
 Architect: DIN-A4 Architektur  
 Installed by: ARGE Metallbau Hörburger & Metallbau Platter

## So you've got great plans? Then show them off!

Who says that size doesn't matter? Particularly on modern, large-scale constructions, PREFA aluminium composite panels are able to display all of their aesthetic qualities and beauty. Not only can the panels be screwed and riveted, they can also be glued. This makes for an elegant, uniform appearance even on large surfaces. The diverse colours and shapes, the chosen degree of gloss and the unusual design surfaces and special coatings are particularly enhanced on large façade areas.

### PREFA ALUMINIUM COMPOSITE PANEL — TECHNICAL DATA

Material	1. coil coated aluminium (front) 2. FR core (fire retardant) 3. coil coated aluminium (rear)
Fastening	screwed, riveted or glued to the aluminium or timber substructure
Coating	front: Duragloss 5000; rear: protective paint
Size	4,010 × 1,500 × 4,0 mm; other dimensions or prefabrications (cutting, milling, drilling) on request
Weight	7.5 kg/m <sup>2</sup>

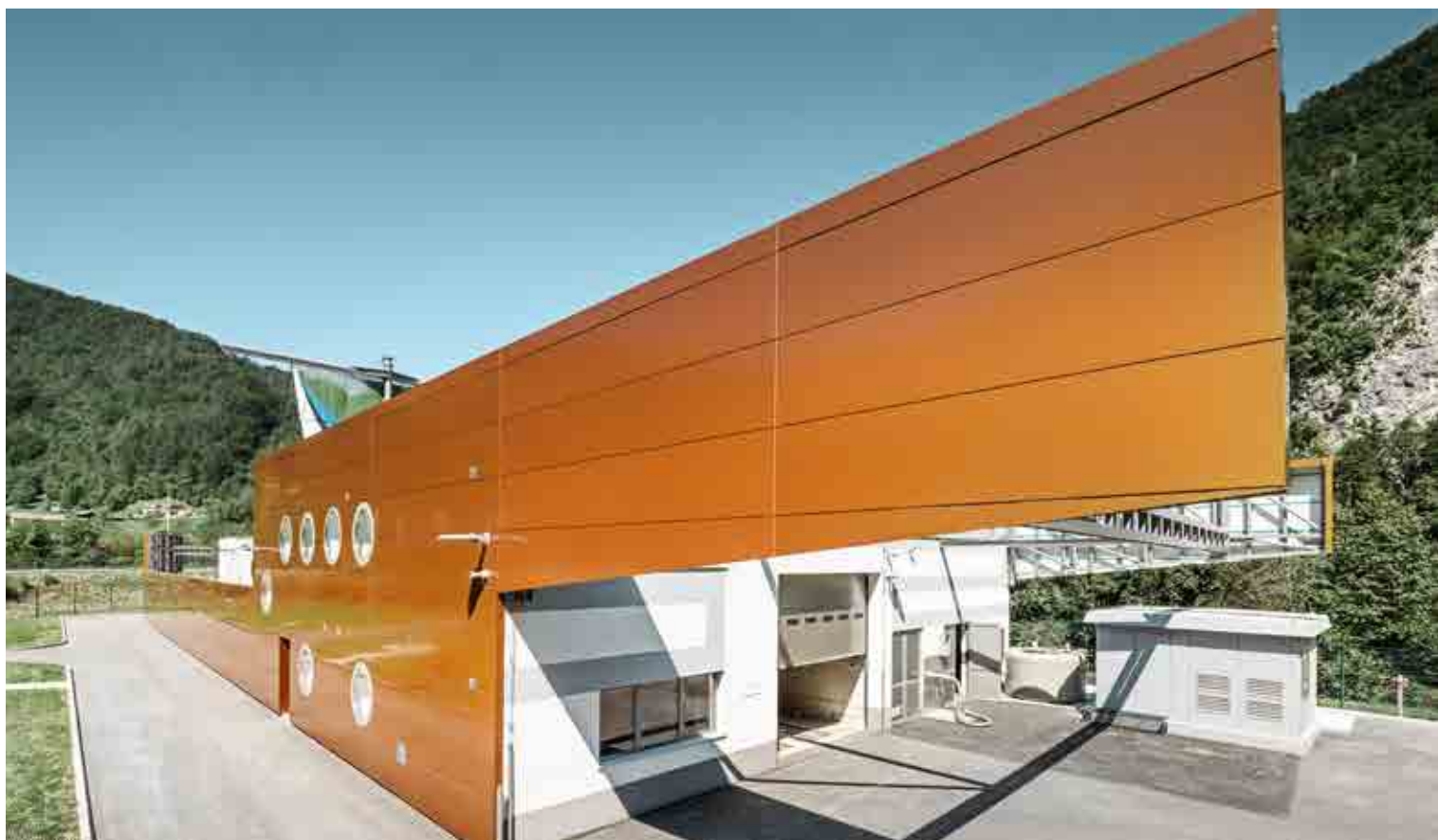


# Façades define your image!

A company's building is its biggest advertisement — and the more it is personalised, the more impressive it will be. The PREFA aluminium composite panel allows you to quite literally show your true colours and — thanks to the various processing options — to create a lasting impression before your visitors have even stepped foot inside the building. And PREFA's service is likely to impress you too — for instance, we offer particularly short delivery times even for small quantities, as well as expert advice throughout the entire project.







Product: PREFA aluminium composite panel  
Colour: special colour  
Location: Zagorje ob Savi (Slovenia)  
Architect: AKA d.o.o.  
Installed by: Deželak Janko s.p.



## Even small surfaces can make a big impression

What would contemporary architecture be without PREFA aluminium composite panels? With their virtually limitless application possibilities and uniform appearance, they also enhance small areas intended to make a big impression.



Product: PREFA aluminium composite panel  
Colour: special colour  
Location: Zwettl (Austria)  
Architect: Franz ZT GmbH  
Installed by: Lagerhaus



## Building-related special solution

The Zwettl music association was founded in 1887. The old rehearsal room on the top floor of the council offices did not reflect the nationwide importance of the music association nor did it meet the acoustic requirements. By removing the music association from the offices, more space was created in the existing building for the increasing administrative functions. The positioning of the new building embraces the previously undefined space and improves the entrance area to the council offices.

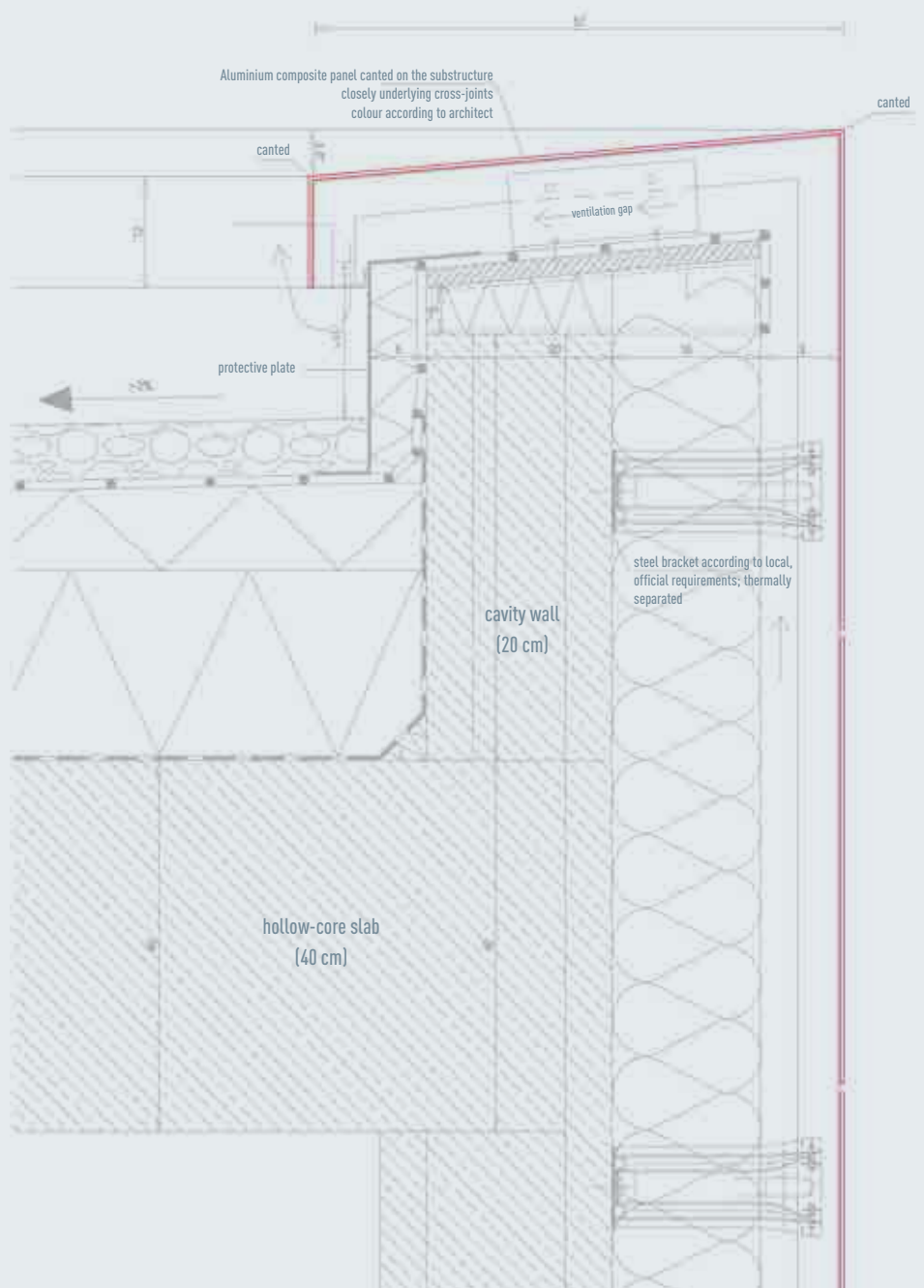
It also gives the music association the opportunity to put on concerts within the immediate vicinity of the rehearsal room. The contemporary, minimalist and cubic architectural style of the new

building forms a deliberate contrast to the neighbouring council offices. The building structure rises slightly above an all-round strip of windows to allow light into the ground floor which accommodates the social areas. From the outside, only the actual rehearsal room with a ceiling height of five metres is apparent. The façade design in the shape of gold-coloured, diamond-shaped PREFA aluminium composite panels was inspired by the association's brass instruments and the pattern on their costumes. With the musicians' new home, the borough of Zwettl is clearly underlining the fact that the music association plays a central role in the community and beyond.



## ROOF PARAPET FLASHING

WITH CANTED PREFAB ALUMINIUM COMPOSITE PANEL



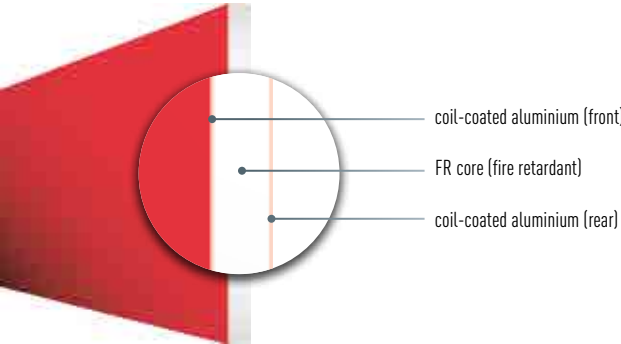
# Clear facts: the façade delivers what PREFA promises

## TECHNICAL DETAILS

The PREFA aluminium composite panel has nothing but advantages to offer. For example, it is highly resistant to corrosion, particularly weather-resistant, and has high deflection stiffness and shock resistance. In addition, the PREFA aluminium composite panel offers a high degree of design freedom with all the advantages of ventilated façades. And all of that with a minimum weight of just 7.5 kg/m².

## LOW FLAMMABILITY

Only the best quality will do for the highest demands. For this reason, the PREFA aluminium composite panel is already fitted as standard with a fire-retardant core.



## CERTIFICATIONS

FIRE-PROTECTION CERTIFICATION IN EUROPE			
Country	Aluminium composite panel	Standard	Classification
Austria	FR	EN 13501	B-s1-d0
Germany	FR	DIN	B1
Switzerland	FR	VKF	5.3

MECHANICAL SYSTEM CERTIFICATIONS EUROPE			
Country	Aluminium composite panel	Reference	No.
Germany	System	General authorisation of building products	2/07 – 1244

## GENERAL KEY FIGURES

ELEMENT	UNIT	COMPOSITE PANEL FR
Thickness	mm	4
Weight	kg/m²	7.5
Sound attenuation	dB	26
Thermal expansion coefficient	mm/m/°C	0.024

## WEIGHT COMPARISONS

Weight of composite panel FR (kg/m²)	7.5
Material thickness (mm)	4
Weight of fibre cement façade panel (kg/m²)	approx. 12.4
Standard thickness (mm)	8
Weight of HPL façade panel	approx. 11.6
Standard thickness (mm)	8





Product: PREFA aluminium composite panel  
Colour: black grey  
Location: Walenstadtberg (Switzerland)  
Installed by: Matthias Beerli

## Faster, better, longer-lasting: from sprint installation to marathon use

### FASTENING OPTIONS



#### RIVETS

The panels can be professionally fastened to the metal substructure with PREFA façade rivets.



#### SCREWS

The PREFA screw system is used on wooden substructures.



#### ADHESIVE BONDING

The panels can be mounted without any visible fastening elements.

### PROCESSING OPTIONS



CUTTING



PUNCHING



SAWING



DRILLING



MILLING  
CONTOUR  
MILLING



PANEL BENDING



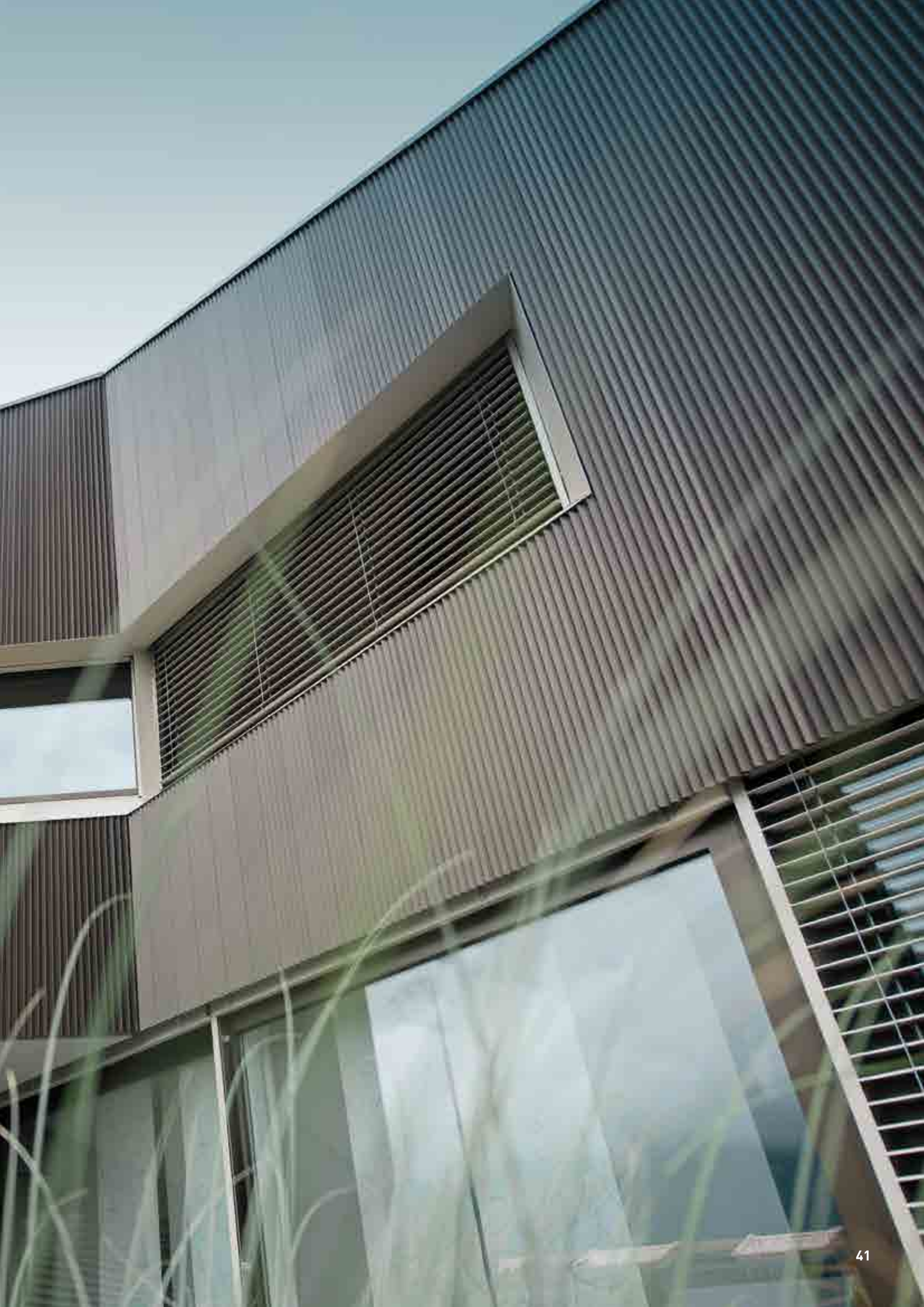
# EXTRUDED PROFILES

The solution  
for serious challenges

Product: PREFA serrated profile  
Colour: anodised special colour  
Location: Saillon (Switzerland)  
Architect: Anako'architecture Sàrl  
Installed by: Eddy Buchars SA







# The magic of contemporary architecture: innovative technology, creatively brought into shape

Product: PREFA serrated profile  
Colour: special colour  
Location: Collonges (Switzerland)  
Architect: Cheseauxrey Architects  
Installed by: Coutaz SA





### PREFA RIPPLE PROFILE

Bold architectural ideas are in high demand. The necessary material is at the ready: the PREFA ripple profile made of 2 mm-thick strong, extruded aluminium alloy for the highest shape retention and superior resistance even under extreme strain. The concealed fastening, fine material structure and elegant appearance make extruded profiles the ideal material for architectural projects designed to last for generations.



### PREFA SERRATED PROFILE

The serrated profile creates very individual aspects on a building. The serrations create a particularly attractive interplay of light and shade on the façade. Creative architects use the PREFA serrated profile to conjure up lovely light effects on large-scale façades which generate fresh enthusiasm every day. The high-quality material and meticulous implementation guarantee decades of delight with this façade.



#### PREFA EXTRUDED PROFILES — TECHNICAL DATA

Material	extruded aluminium alloy
Fastening	with concealed screws
Surface	mill finish, powder-coated
Size	profile height / spacing / material thickness  ripple profile: 10/47/2.00 mm; width: 140 mm  serrated profile: 22/40/2.00 mm; width: 200 mm
Weight	ripple profile: 6.62 kg per m <sup>2</sup> serrated profile: 7.5 kg per m <sup>2</sup>

Product: PREFA serrated profile  
Location: Austria  
Architect: Tom Projekt Design Arthof Projects





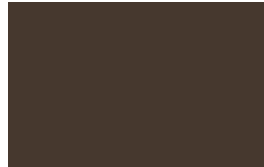
# THE PREFA COLOUR RANGE

for façade systems

## PREFA P.10

THE TOUGH ALUMINIUM INNOVATION

- 1 Rhomboid façade tile 20 × 20
- 2 Rhomboid façade tile 29 × 29 | 44 × 44
- 3 Façade shingle
- 4 FX.12 façade panel
- 5 Siding.X
- 6 Siding 200 × 1.00 mm  
Siding 138 × 0.70 mm
- 7 Siding 300 × 1.20 mm
- 8 Aluminium composite panel
- 9 Prefalz



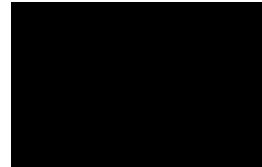
01 P.10 brown

1 2 3 4 5 6 7 9



02 P.10 anthracite

1 2 3 4 5 6 7 9



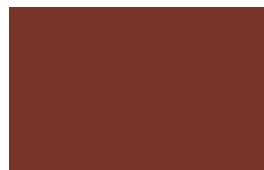
03 P.10 black (own colour)

1 2 3 4 5 6 7 9



04 P.10 brick red

1 2 3 4 5 6 9



05 P.10 oxide red

1 2 3 4 5 6 9



06 P.10 moss green (similar to RAL 6005)

1 2 3 4 5 6 9



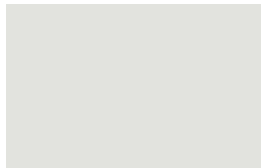
07 P.10 light grey

1 2 3 4 5 6 7 9



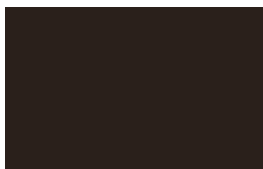
08 P.10 zinc grey (own colour)

1 9



10 P.10 prefa white (similar to RAL 9002)

1 4 5 6 9



11 P.10 nut brown (own colour)

1 2 3 4 5 6 9



41 P.10 rust brown\*

4 5 6



42 P.10 sand brown\*

4 5 6



43 P.10 stone grey\*

1 2 3 4 5 6 7 9



12 metallic silver\*\*\* (similar to RAL 9006)

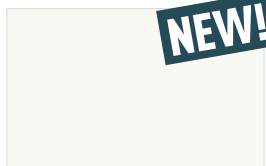
1 4 5 6 7 8 9



13 plain aluminium \*\*/\*\*\*

1 2 3 4 9





17 P.10 pure white (similar to RAL 9010)

6 8



19 P.10 dark grey

5 6 7 9



20 smoke silver\*\*\* (similar to RAL 9007)

6 8



21 ruby red (similar to RAL 3003)

6 8



23 black grey (own colour)

6 8 9



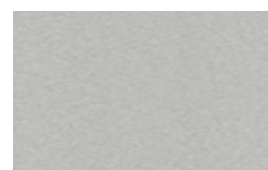
25 ivory (similar to RAL 1015)

4 5 6



26 dark wood (own colour)

5 6



27 brushed aluminium (own colour)

8



40 light wood (own colour)

6



44 matt anthracite (own colour)

8



45 bronze (own colour)\*\*\*

6 8 9



46 P.10 patina green (own colour)\*

9



47 patina grey (own colour)\*

5 6 9



48 dark titanium (own colour)\*\*\*

8

\* The recreated natural colouring of the stone grey P.10 colour varies widely in shade, giving the product its distinctive character. This also applies to the sand brown, rust brown, patina green, patina grey and plain aluminium colours.

\*\* Surface appearance alterations caused by processing are not covered by the guarantee. Follow the instructions.

\*\*\* Colour differences may occur when coating metal-effect colours.

# PREFA PRODUCT RANGE

## ROOF/FACADE

### ROOF TILE

600 × 420 mm in laid area



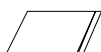
### R.16 ROOF TILE

700 × 420 mm in laid area



### DS.19 SHINGLE

480 × 262 mm in laid area



### ROOF AND WALL SHINGLE

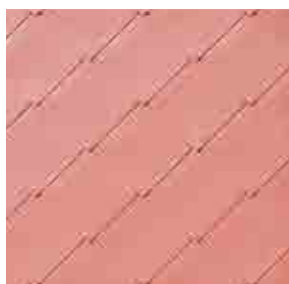
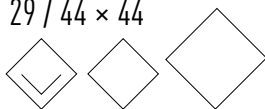
420 × 240 mm in laid area



### RHOMBOID ROOF / FACADE TILE 29 × 29 / 44 × 44

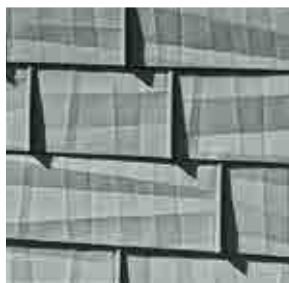
290 × 290 mm in laid area

440 × 440 mm in laid area



### RHOMBOID FACADE TILE 20 × 20

200 × 200 mm in laid area



### FX.12 ROOF AND FACADE PANEL

700 × 420 mm and 1400 × 420 mm



### PREFALZ AND FALZONAL

#### Standard sizes

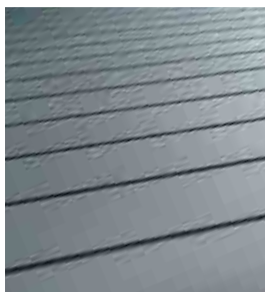
For roof 0.7 × 500 mm; 0.7 × 650 mm

For façade 0.7 × 500 mm

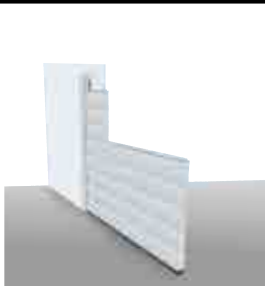
Flashing strip 0.7 × 1000 mm







**NEW!**  
NOW ALSO  
IN P.10

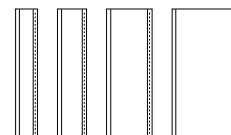


# PREFA PRODUCT RANGE

## FAÇADE

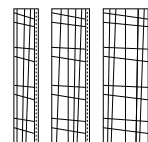
### SIDING

138 × 0.7 mm; 200 × 1.0 mm;  
300 × 1.2 mm; 400 × 1.2 mm



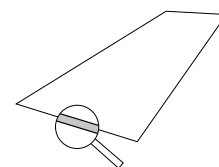
### SIDING.X

200 × 1.0 mm; 300 × 1.0 mm; 400 × 1.0 mm



### COMPOSITE PANEL

1500 × 4010 × 4.0 mm



### PROFILES

Ripple profile 10/47/2.0 mm, width 140 mm, weight 6.62 kg/m<sup>2</sup>  
Serrated profile 22/40/2.0 mm, width 200 mm, weight 7.5 kg/m<sup>2</sup>

## ROOF DRAINAGE

### TRADITIONAL

Half round gutter 250 mm/280 mm/333 mm/400 mm  
Box gutter 250 mm/333 mm/400 mm/500 mm  
On-roof gutter 700 mm × 1.0 mm

### MODERN

PREFA square downpipe 100 × 100 mm



## PS.13 INSTALLATION SYSTEM

### SOLAR FIXING SYSTEM AND ACCESSORIES

For the installation of photovoltaic modules on all PREFA roof systems

## FLOOD PROTECTION

### FOR BUILDING AND LANDSCAPE PROTECTION



## 10 GOOD REASONS FOR CHOOSING PREFA

- ! STORM-PROOF
- ! RUST-PROOF
- ! BREAK-PROOF
- ! LIGHT
- ! BEAUTIFUL
- ! COLOUR-FAST SURFACE
- ! GREAT FOR RENOVATIONS
- ! COMPLETE SYSTEM
- ! ENVIRONMENTALLY FRIENDLY
- ! 40-YEAR GUARANTEE



### THE PREFA GROUP IS REPRESENTED IN THE FOLLOWING COUNTRIES:

Austria, Germany, Switzerland, Italy, France, Belgium, the Netherlands, Luxembourg, Denmark, Sweden, Norway, the Czech Republic, Slovakia, Hungary, Poland, Slovenia, Croatia, Estonia, Latvia, Lithuania, Russia, Great-Britain, Ireland

\* The colour guarantee ensures that the painted surface is protected from chips and blistering under the terms specified in the guarantee certificate. You can find more information on the material and colour guarantee at [www.prefa.com/Garantee](http://www.prefa.com/Garantee)

Photos: PREFA | Croce & Wir | Marion Lafogler | Werner Jäger  
Subject to technical modifications and printing errors. Printed colours may vary from the original material. 08.2019 | MFG | TM